

The following work has been carried out in January 2016 on behalf of MKCCM and CMK Town Council.

**Landscaping**

Requests logged: 2  
Resolved: 1  
Outstanding: 1

**Types of job and locations**

In January the winter pruning schedule continues. Progress is being made in the boulevards and underpasses.



Above left: Branch for removal on North Row. Above right: Trees pruned front Intu Midsummer.

**Rough sleepers**

There are approximately 15 rough sleepers in Central Milton Keynes, the main areas being Marks and Spencer, the Job Centre, the underpass nearest Jury's Inn, and the Train Station. During patrols in January I noticed a slight decline in rough sleepers, but an increase in aggressive beggars. Jointly working with the Police and premises' Security Officers, we have managed to move many of the beggars away to stop them intimidating the general public.

On 27 January a meeting was held with Milton Keynes Council, Thames Valley Police and Safer MK. A decision was taken by this enforcement tasking group to serve 24 hour notices on rough sleepers and their belongings if certain areas are not clean and tidy within the timeframe allocated, goods would be removed from a health and safety and security risk perspective. Two days of action are planned in February to visit every person sleeping rough to establish who genuinely needs help and assistance, and point them into the right direction of professional caseworkers. On the second day of action, all unwanted items will be removed from locations across CMK by Serco street cleansing teams. This action plan will really benefit all pedestrians and visitors who won't have to look at waste at every underpass location.



Above left and right: Items which were removed from the rear of Currys. The person had vacated the tent and moved to a new area. Items abandoned leaving a major security risk, near the Job Centre Midsummer Boulevard.

**Highways and Maintenance**

Requests logged: 8  
Resolved: 3  
Outstanding: 5

- Damaged footpath near Medina House. Resolved in two months.
- Damaged central road barriers near Jurys Inn. Resolved in six weeks.
- Three damaged bollards on Station Square. Resolved in four weeks.
- Eight cracked slabs on Station Square. Deemed not a safety issue by MK Council. Job closed.
- Dangerous noticeboard outside Door 9 of centre:mk, on Silbury Boulevard. MK Council unable to rectify due to budget constraints.
- Curb issue on Silbury Boulevard. Deemed not a safety issue by MK Council. Job closed.
- Path between Job Centre & Margaret Powell House for repair. Deemed not a safety issue by MK Council. Job closed.
- 40 slabs tipping and tilting outside Virgin Money. Deemed not a safety issue by MK Council. Job closed.
- One street sign damaged on Midsummer Boulevard. MK Council unable to rectify due to budget constraints.
- One damaged salt bin on North Row. Pending resolution.



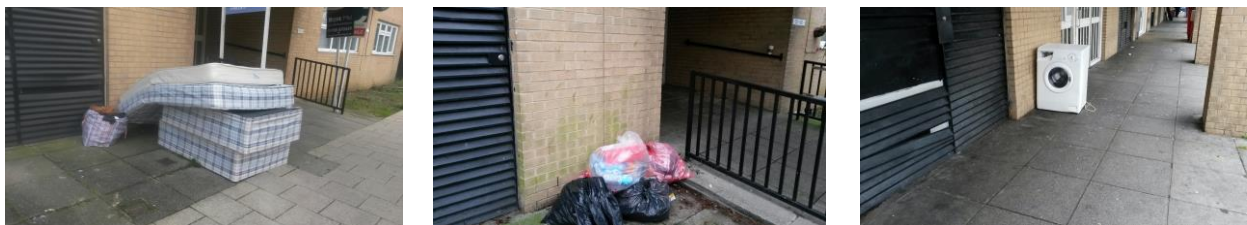
Above left: Road barriers Jurys Inn. Centre: Before Medina path. Above: Medina path repaired.

**Littering (including shopping trolleys)**

Requests logged: 53 trolleys  
 Resolved: 48  
 Outstanding: 5

**Types of job and locations**

- 48 trolleys collected across Central Milton Keynes.
- Fly tipping has started again at Lower 12<sup>th</sup> Street. 20 bags of rubbish had to be cleared away within hours, plus car tyres have been left in this location. I have requested Milton Keynes Council and Serco remove this facility. It has never been used correctly by the public, and due to an increase in rodents at this location it is a health and safety issue.
- Increase in rubbish being North 9<sup>th</sup> and 10<sup>th</sup> Streets on Silbury Boulevard. Housing officers are aware of the situation. I advised warning letters should be sent out to residents to stop this unacceptable behaviour.



Above: Fly tipping at North 9<sup>th</sup> and 10<sup>th</sup> Streets.

**Butt bins**

In January I have noticed a decline in people disposing of cigarette waste incorrectly, because the butt bins are provided. No fixed penalty notices were issued in January 2016. If there are issues of cigarettes

not being disposed of correctly in certain areas, it has been highlighted to building facilities managers who issue internal emails to their staff reminding of the need to use the bins provided.



Above: New butt bin outside Acorn House Midsummer.

## **Graffiti**

Requests logged: 48

Resolved: 43

Outstanding: 5

These jobs were logged at various dates across January 2016. Most of these are small tags normally, but lately larger tags have been visible. See picture below. Some tags are marker pen sized. Please note a graffiti tag is the offender's personalised signature.



Above: Graffiti at underpass near Station Square.

## **Love Where You Live events**

The Love Where You Live events will take place on Thursdays from 12-2pm starting in April 2016. These will include litter picks, street furniture painting, and possible drain clearance in problem areas.

- 21 April
- 26 May
- 23 June
- 11 August (24 hour event led by Xscape McDonalds)
- 15 September
- 13 October
- 8 December

An additional event will be held at lunchtime on Friday 4 March to support the 'Clean for the Queen' initiative.

## **Business engagement**

I have met with the following groups to improve areas of Central Milton Keynes, and encourage workers to take part in projects near the location of their workplace, such as forthcoming Love Where You Live events.

- Network Rail – smoking and litter related issues at the front of the building. A bin will be installed by their team.

- Santander – site visit to inspect tree issues and drainage issues which were ongoing in January. MK Council are now dealing with this.
- centre:mk, intu, Xscape and Thames Valley Police – working to move on aggressive beggars.
- Market – reducing fly tipping issues by giving advice and education.
- Serco rapid teams clearing waste within an hour, at any given location.
- MK Gallery and MK Theatre – pest control and landscaping issues.
- Milton Keynes Council housing teams –highlighting anti-social behaviour issues.

#### **Engagement with residents**

- I have been dealing with ongoing anti-social behaviour issues in the flats on Silbury Boulevard.
- I continue to work with Hilarie Bowman on the launch of a Neighbourhood Watch schemes for Central Milton Keynes. We hope to launch fully in Spring 2016.
- Fly posting issues in Campbell Park have been resolved within 48 hours of problems being reported to me.
- Parking issues around Albion Place, Campbell Park. Thames Valley Police aware.
- Residents Forum held on 28<sup>th</sup> January was positive but saw a lower than usual attendance.

#### **Local issues outstanding**

- Broken railings outside CMK Library have yet to be resolved.
- Drains across Central Milton Keynes are blocking during heavy rain. Currently awaiting response from Milton Keynes Council regarding responsibility.
- 20 'day burning' street lights have been outstanding for months on Midsummer Boulevard near The Pinnacle.
- 25 uneven slabs in the Market area. This is an ongoing issue pending further action.
- Broken central road barriers not being removed or replaced along the Boulevards.