

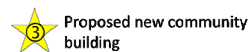
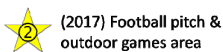
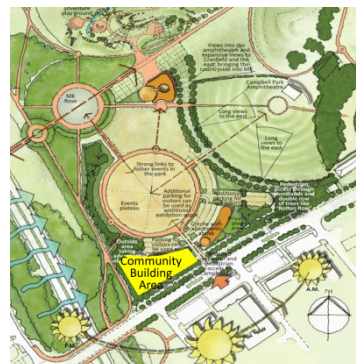
Residents' Consultation

The CMK Town Council is holding a series of public exhibitions on proposals for the Events Plateau in Campbell Park. This pamphlet shows you some of the exhibition posters, and you can see more on our website.

Why are we taking this initiative? Although CMK's population is rapidly growing, our residents still lack the level of community facilities that people enjoy in the rest of Milton Keynes. There is currently only one community centre – Centrecom – with one large meeting room and this is almost always fully booked. A second community facility, centred on outdoor sports with an all-weather football pitch, is due to open near the Network Rail building in 2017. A third facility, offering flexible space, are now underway. The site is off Avebury Boulevard in Campbell Park.

Plans for a third facility, offering flexible space, are now underway. The site is off Avebury Boulevard in Campbell Park.

To help deliver this exciting new facility in 2018 we are teaming up with The Parks Trust. The Parks Trust is also planning new amenities in Campbell Park including a children's nursery, adventure play area and café/restaurant. This will be designed to a high standard and will take advantage of the wonderful views.



Do You Want Space for Pop-up Performances?



Films?



Do You Want Space for Social Events?



What Do You Want From Your Community Building?

How much space delivers what?


	size cost	150 sqm £500k	300 sqm £900k	450 sqm £1.3m
General facilities foyer, kitchen/servery, toilets, internal stores, CMKTC office		✓	✓	✓
Space for social events meetings, clubs, parties, pre-school activities, fitness classes, yoga, zumba		✓	✓	✓
Space for pop-up performances music, dance, comedy, plays, open-mike, rehearsals for local bands, performing arts		✗	✓	✓
Space for indoor sports recreational sports, basketball (half-court), netball, table tennis, carpet bowls, circus skills		✗		✓
Changing rooms & outdoor equipment store for fitness groups using the Park, trestle tables, chairs for picnics & parties		✗	✗	✓

Do You Want Space for Indoor Sports?



Have Your Say ...

Please complete an online feedback form...



[Home](#)
[Town Council](#)
[News and Views](#)
[Local Information](#)
[Local Events](#)
[Contact Us](#)

Community Building
built & run by CMK Town Council for the community

	Very interested	Fairly interested	A little interested	Not interested
Space for social events e.g. meetings, clubs, parties, pre-school fitness classes, yoga, zumba				
Space for pop-up performances e.g. music, dance, stand-up comedy, plays, open-rehearsals for local bands, performing arts				
Space for indoor sports e.g. recreational sports, basketball (half-court), table tennis, expert bowls, circus skills				
Changing rooms & outdoor equipment store e.g. for fitness groups using the Park, trestle tables and chairs for picnics & parties				

Cafe, Adventure Play Area & Nursery
built & run by The Parks Trust for the general public

	Strongly support	Support	Do not support	No opinion
Cafe and water centre A striking new building in the centre of the park with a large sheltered sitting out area, good views and a small play area aimed at the under-fives				
Adventure play site A range of exciting play equipment made of natural materials (wood, rope, rocks) catering for ages 3 to 10 upwards				
Children's nursery A high quality building that matches the community building with houses a new childcare facility aimed at local working on a flex				

The feedback from the residents' questionnaire last year has been very useful in reaching this stage, and we would now like to hear more.

If you haven't been able to visit one of the public exhibitions, you can see the posters and learn more by visiting www.cmktowncouncil.gov.uk

Please tell us your views on the proposals to help us plan this exciting new project.

The consultation runs until 31 March 2016. You can also complete the feedback form online.

...or contact your CMK Town Councillor

CMK West of Saxon Gate



André Brady
andre.brady@cmktowncouncil.gov.uk

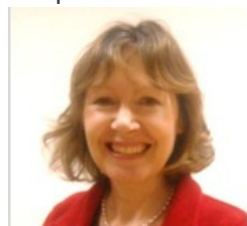


Jim McGowan
jim.mcgowan@cmktowncouncil.gov.uk



Andrew Thomas
andrew.thomas@cmktowncouncil.gov.uk

Campbell Park



Linda Inoki
linda.inoki@cmktowncouncil.gov.uk

CMK East of Saxon Gate



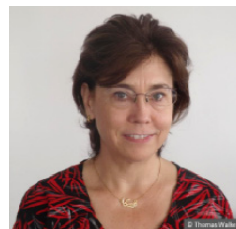
Ken Baker
ken.backer@cmktowncouncil.gov.uk



Hilarie Bowman
hilarie.bowman@cmktowncouncil.gov.uk



Ramo Erdogan
ramo.erdogan@cmktowncouncil.gov.uk



Rebecca Kurth
rebecca.kurth@cmktowncouncil.gov.uk